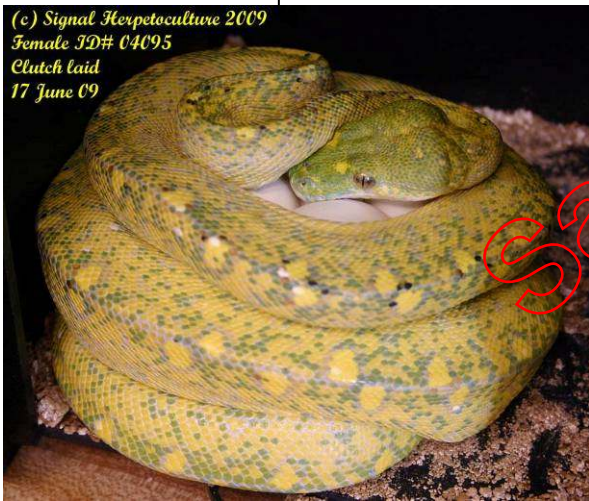
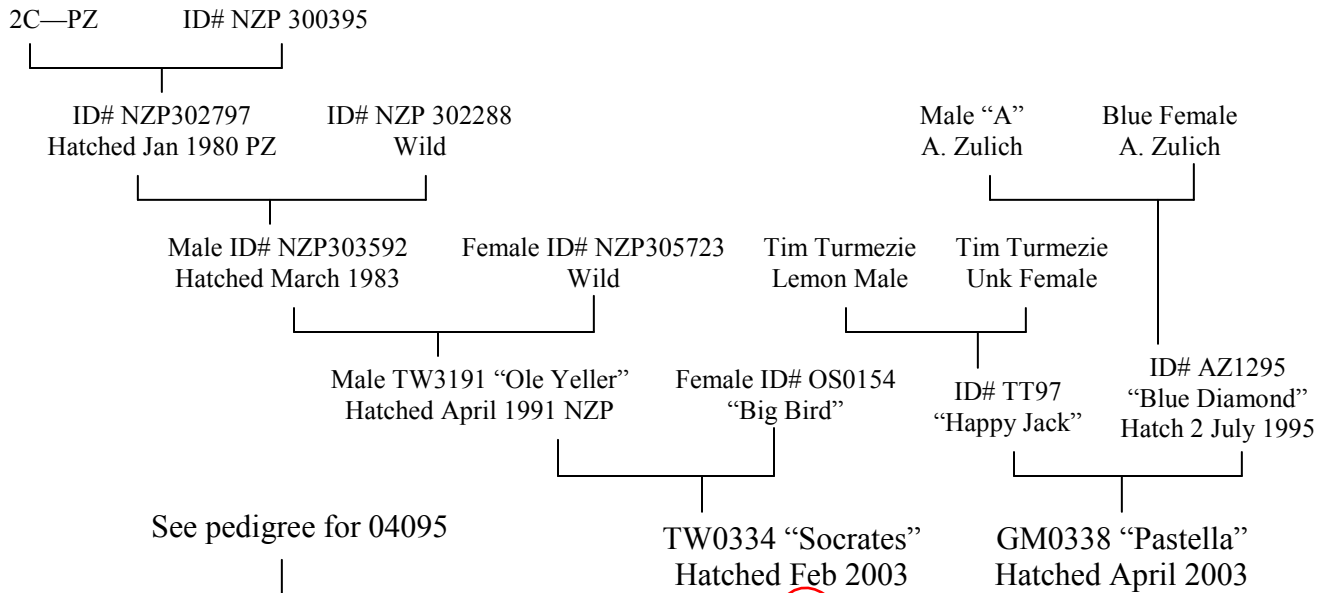


Signal Herpetoculture

Morelia viridis 10056—10072 Pedigree



Female ID# 04095
Hatched 31 July 2004
CBB at Signal Herpetoculture



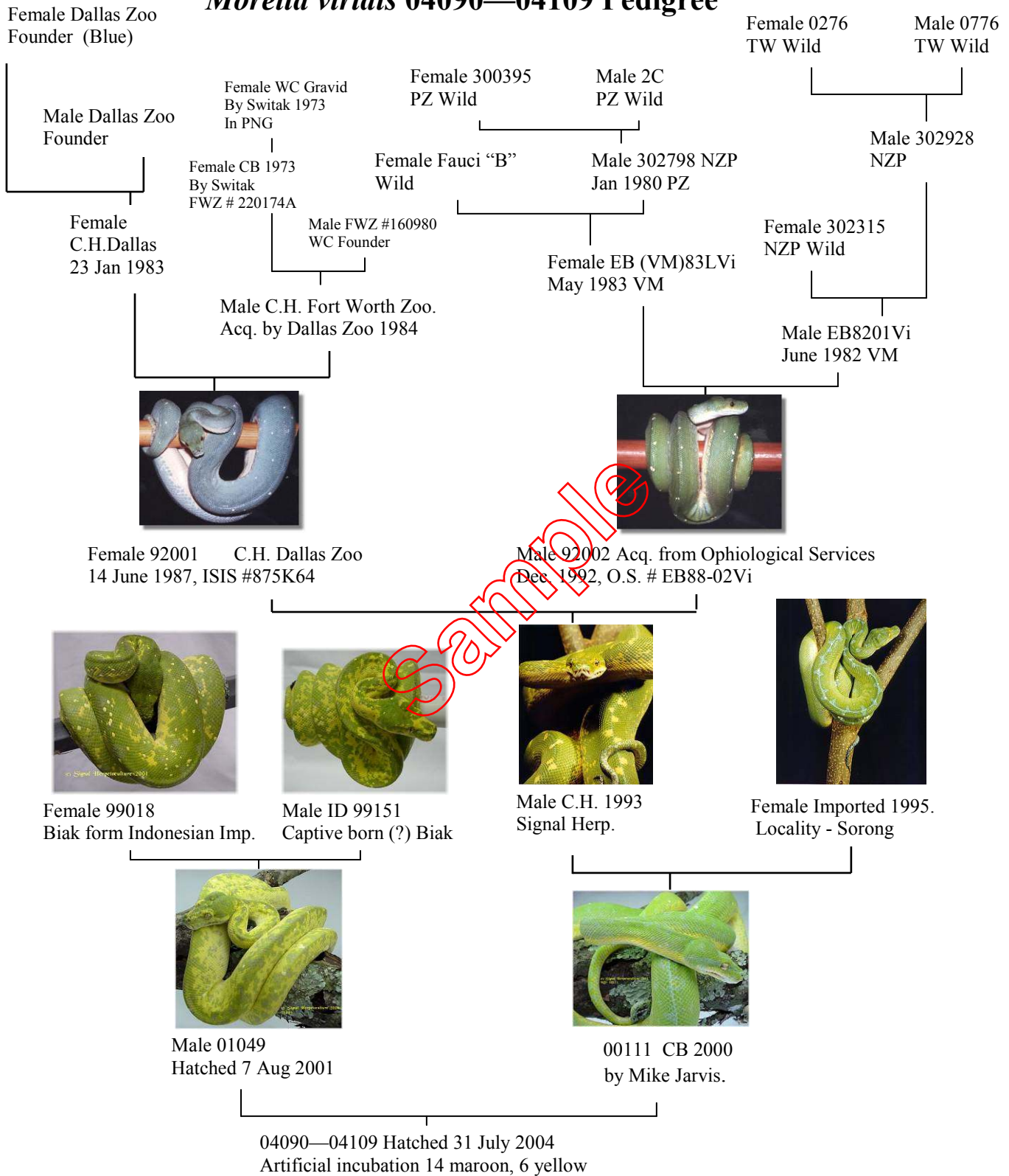
Male ID# GM0732
Hatched 13 May 2007 by
Greg Maxwell

10056—10072 Hatched June 2010
Artificial incubation, 13 maroon & 3 yellow.

Signal Herpetoculture, P.O. Box 204, Signal Mtn., TN 37377
Rico Walder, Owner 423.886.3029, www.signalherp.com

Signal Herpetoculture

Morelia viridis 04090—04109 Pedigree



Signal Herpetoculture, P.O. Box 204, Signal Mtn., TN 37377
Rico Walder, Owner 423.886.3029, www.signalherp.com